

Bass

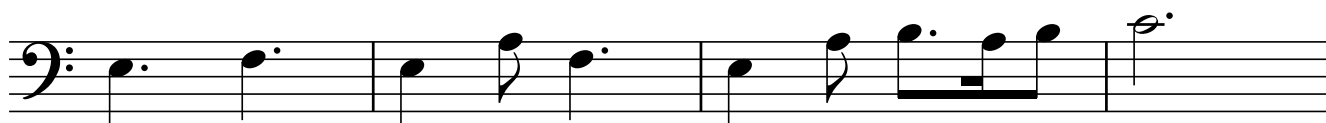
♩. = 48 Hashiveno / kanon form on cuo

*Kör 1*



Hashi-vej nu Hashi-vej nu A-do-o-nai e - le - cha

5 *Kör 2*



ve - na shu - va ve - na shu - va

9 *Kör 3*



cha - desh cha - desh ya - mei nu ke - dem.